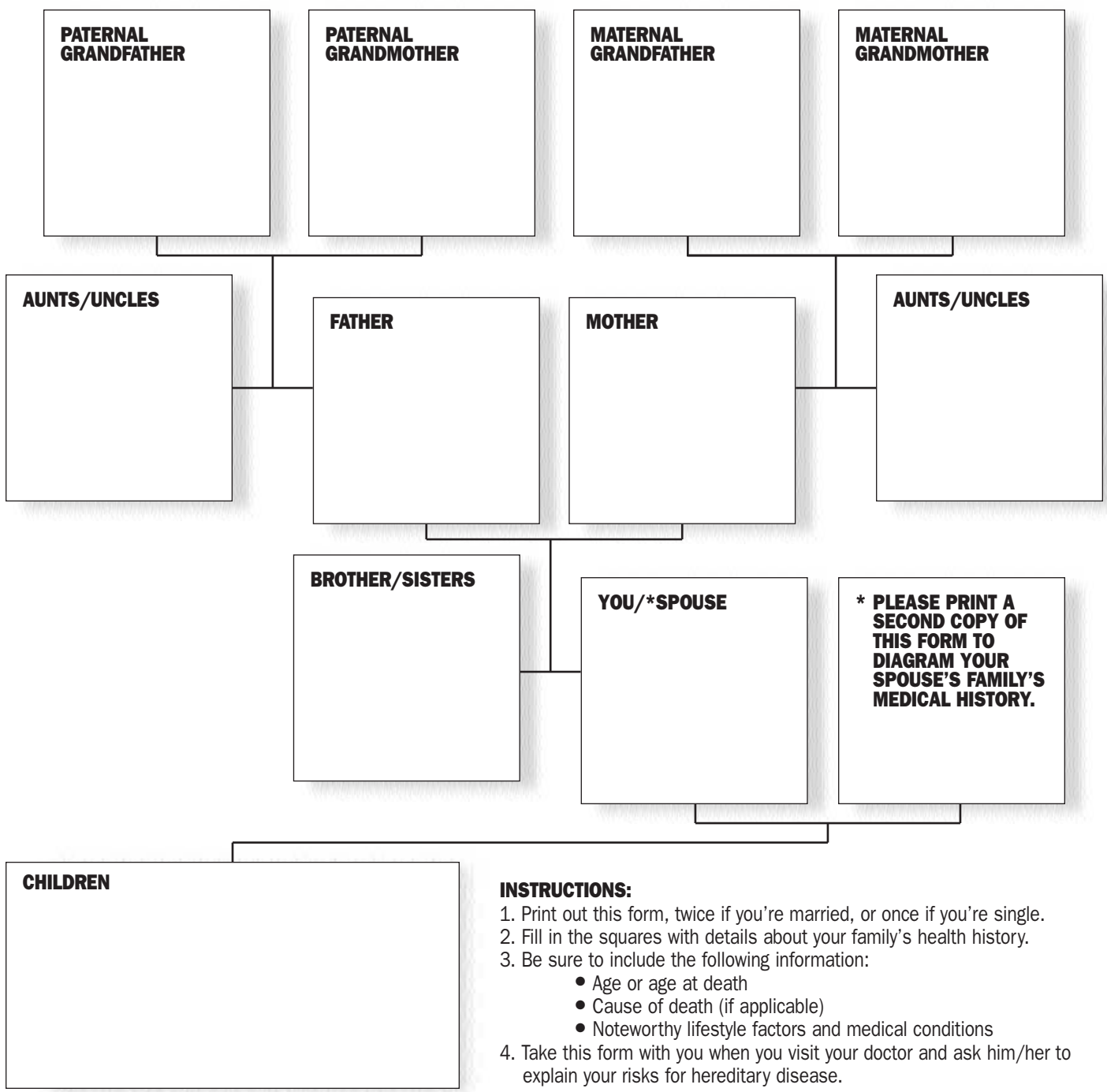


# Family Medical History Chart



**INSTRUCTIONS:**

1. Print out this form, twice if you're married, or once if you're single.
2. Fill in the squares with details about your family's health history.
3. Be sure to include the following information:
  - Age or age at death
  - Cause of death (if applicable)
  - Noteworthy lifestyle factors and medical conditions
4. Take this form with you when you visit your doctor and ask him/her to explain your risks for hereditary disease.

**For more information on nutrition, weight loss or other wellness education opportunities, call Baptist Hospital East at (502) 897-8131, e-mail us at [Healthinfo@BaptistEast-hy.com](mailto:Healthinfo@BaptistEast-hy.com), or visit us online at [www.baptisteast.com](http://www.baptisteast.com).**

The articles and information in HealthyYou! have been reviewed for medical accuracy and soundness by the Medical Editorial Board of Baptist Hospital East. This Board consists of General Medicine Practitioners and Medical Specialists appropriate to the topic covered. More information on these physicians and the source material for each piece is available by writing to: Marketing and Public Relations Department, Baptist Hospital East, 4000 Kresge Way, Louisville, KY 40207. HealthyYou! makes every attempt to ensure that the information it contains is medically accurate and up-to-date. However, all material is for informational purposes and is intended to complement, not substitute for, the advice of your physician. Before trying any medical treatment or changing your present routine or program, consult with your physician, who can discuss your individual needs, symptoms and treatment. HealthyYou! name, logo and content © 2004 by SVI, 209 10th Ave. South, Suite 525, Nashville, TN 37203.